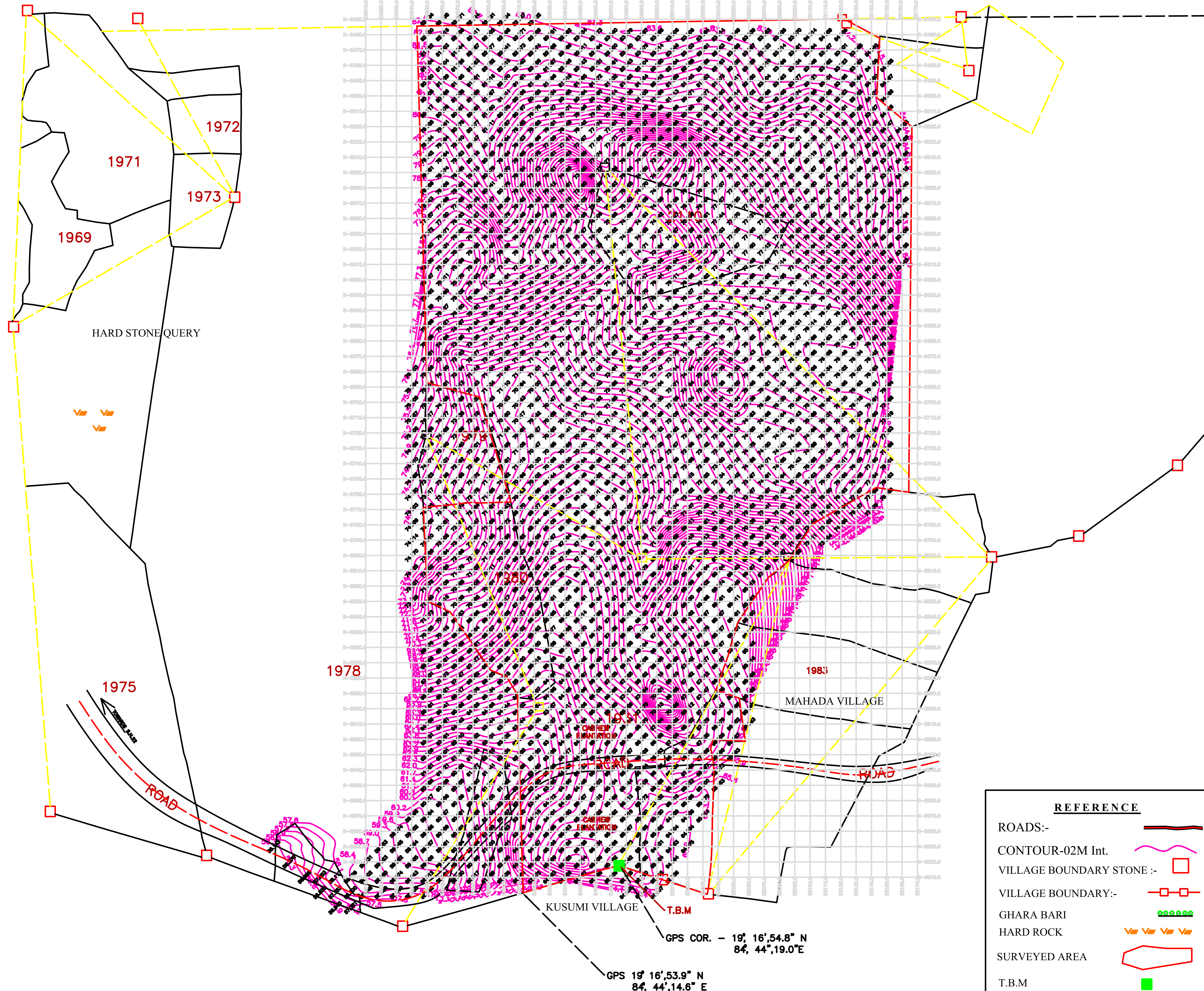


MAHADA VILLAGE



REFERENCE	
ROADS:-	
CONTOUR-02M Int.	
VILLAGE BOUNDARY STONE :-	
VILLAGE BOUNDARY:-	
GHARA BARI	
HARD ROCK	
SURVEYED AREA	
T.B.M	

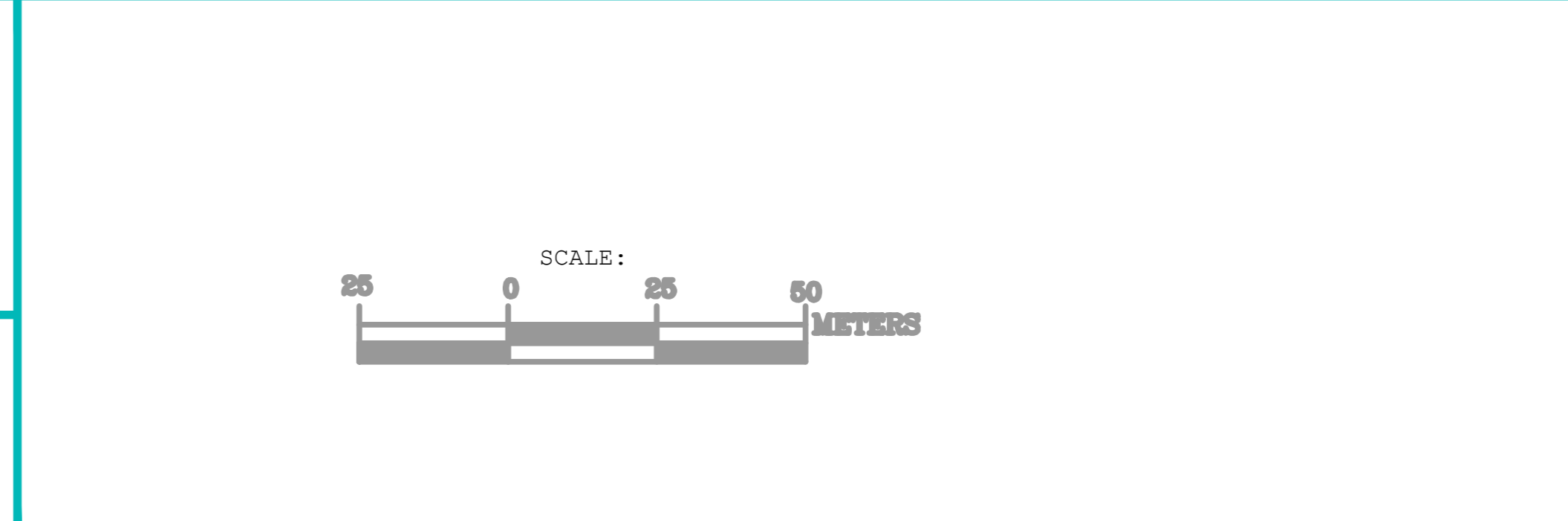
NOTES:

1. ALL DIMENSION ARE IN METERS.
2. GRID INTERVAL 10X10M.
3. CONTOUR INTERVAL @ 0.3 M.
4. SPOT LEVEL- 10X10 M.
5. SURVEY AREA-33.633 Acres.
6. T.B.M VALUE FROM M.S.L = 67.141M
(Contours passing through built-ups are for continuation only & may not reflect the exact RL)

TITLE:
 TOPOGRAPHICAL SURVEY MAP OF PROPOSED MSW PROCESSING & DISPOSAL SITE AT MOHUDA NEAR BERHAMPUR (ORISSA)

SCALE: 1:1000.

DATE: OCTOBER 2012



GPS COR. - 19° 16' 54.8" N
 84° 44' 19.0" E

GPS 19° 16' 53.9" N
 84° 44' 14.6" E